

Site A. – Proposed interpretation centre at Queen’s Road Tunnel

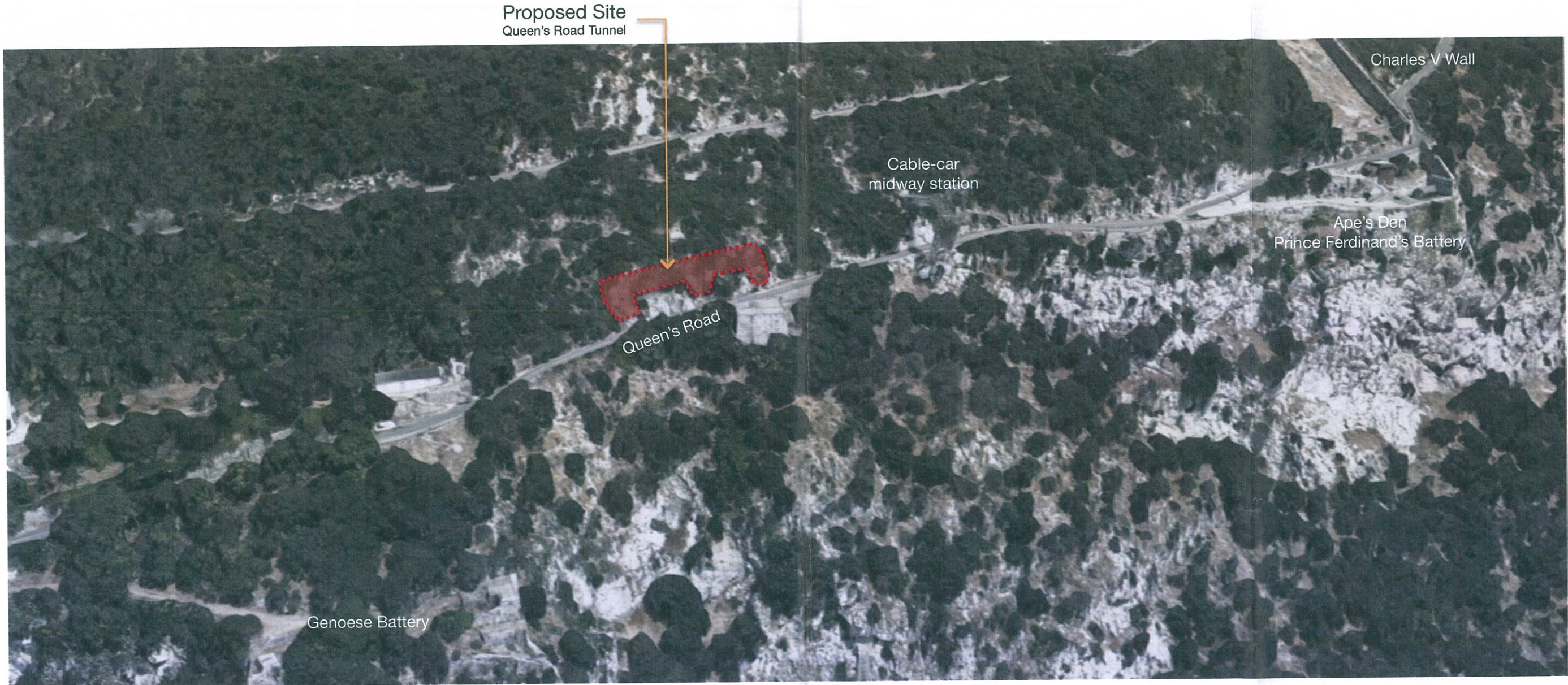




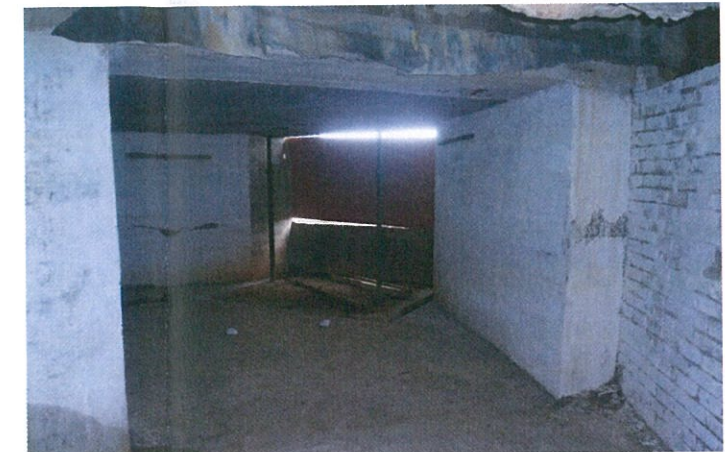
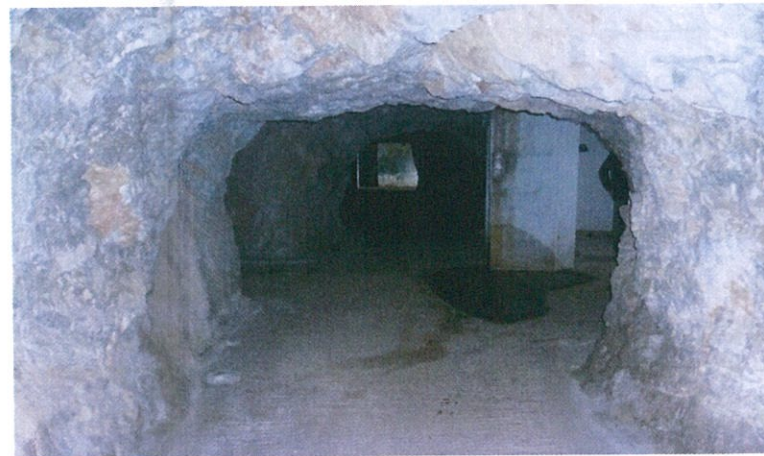
## A. Queen's Road Tunnel – Location and context



Existing disused military tunnel adjacent to Queen's Road, in close proximity to Ape's Den / Prince Ferdinand's Battery and Genoese Battery.



**Existing condition:** Disused former military tunnels, currently not accessible to the general public

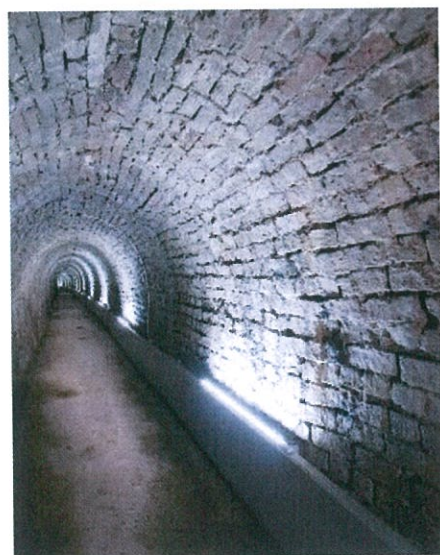
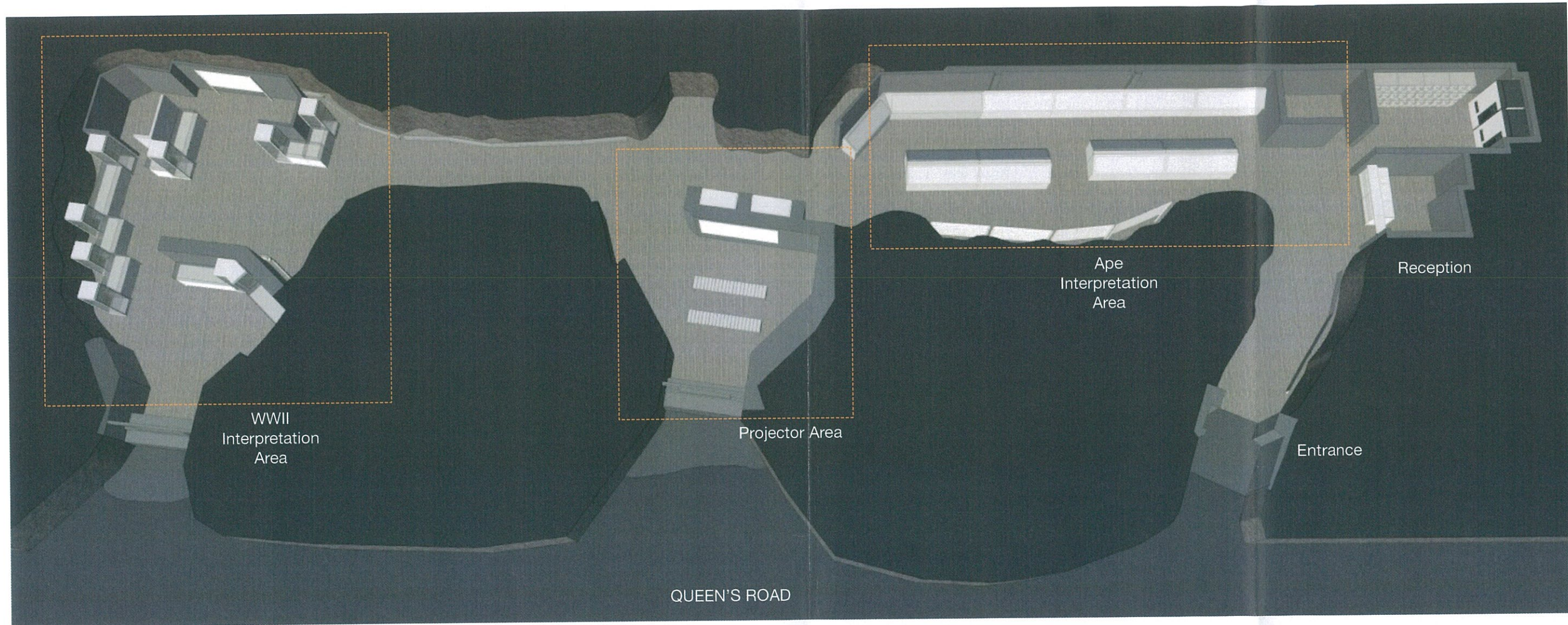




## A. Queen's Road Tunnel – Proposed intervention



Internal fit-out to convert the site into an interpretation centre showcasing both WWII aspects and the native apes. New illuminated display cases and information boards, lighting and projectors introduced.





# A. Queen's Road Tunnel – Proposed intervention



Artistic impression of proposed intervention.

